

ROSS CARVILL INSTRUCTIONS

PLASTIC EPISODE

RECYCLED JELLYFISH



HERE IS WHAT YOU NEED



1) RECYCLE CIRCULAR PIECE OF PLASTIC eg. YOGHURT POT LID.



2) LONG TENTACLE LIKE PIECES OF PLASTIC. EG. OLD SHOE LACES, RIBBONS.



3) RANDOM PIECES OF PLASTIC. FIND DIFFERENT SHAPES, SIZES AND COLOURS.



4) **GLUE!!!**

1



RE-USE, RECYCLE. TRY TO SOURCE ALL THE MATERIALS FROM PLACES LIKE THE RECYCLING BIN. THIS TURNS SOMETHING NEGATIVE INTO ART!

2

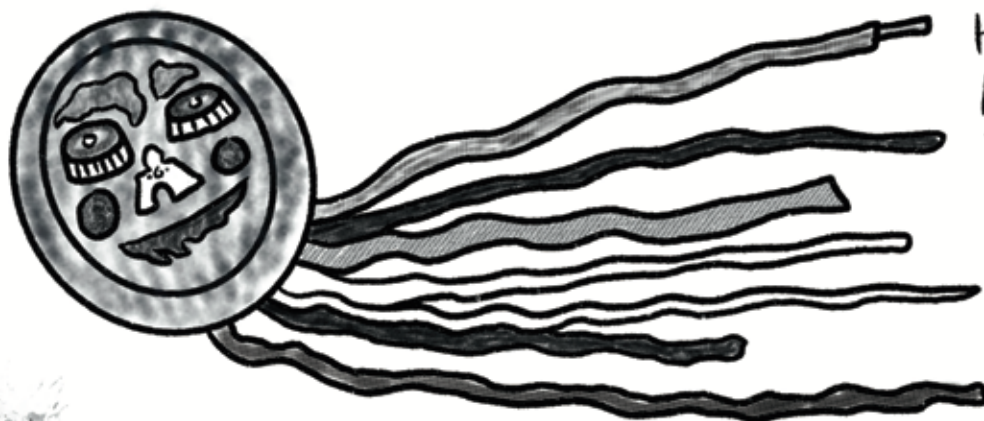


USE THE GLUE TO STICK PLASTIC TO YOUR CIRCLE PIECE. MAYBE MAKE A FACE??

3



FLIP OVER YOUR JELLYFISH. STICK ALL THE LONG TENTACLE PIECES TO THE BOTTOM EDGE. LEAVING A LOT DANGLING.



HAVE FUN!
ALL THATS LEFT TO DO NOW IS GIVE YOUR JELLY A NAME... I THINK MINE'S CALLED KELLY JELLY!